



## 瑞安承建有限公司 Shui On Building Contractors Limited

- 葵聯路公共房屋地盤 (合約編號 20070021) /

Public Rental Housing Development at Kwai Luen Road (Contract No. 20070021)

我們致力履行企業社會責任，關愛環境，盡力減低工程對環境的影響，並推廣減碳排放的措施和成效、維持睦鄰關係，將綠色訊息傳達至下一代。公司上下秉承「瑞安精神」以達致持續發展。

We are committed to corporate social responsibility, and strive to minimize the impacts of our activities on the environment. We care for the environment, and make every effort to promote our carbon emission reduction efforts and results, maintain good dialogue with our neighbors, and spread green messages to the next generation. We are committed to upholding the Shui On Spirit to foster sustainability.



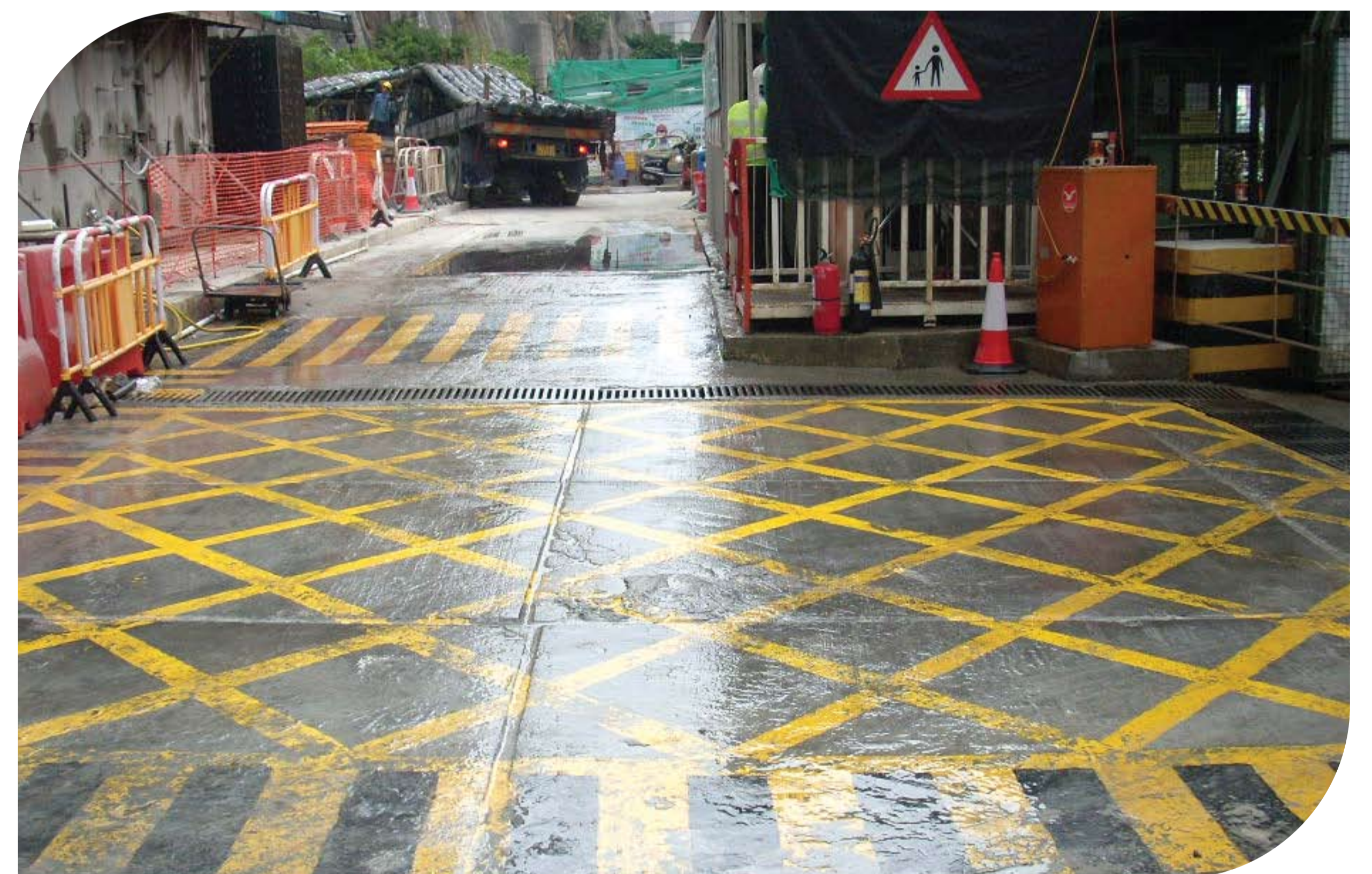
為鄰校築建花園提供材料及技術指導，培育年青一代綠色意念。  
Provide materials and technical support for the construction of planters in neighboring school to nurture green awareness of younger.



透過液晶體顯示屏向公眾發放地盤減碳排放資訊。  
LED display panel to instill project carbon emission reduction information to the public.



裝設自動洗車池，確保車輛離開時不帶有泥塵。  
Automatic wheel washing machine to remove dust from trucks when leaving the site.



在泥地鋪上可循環再用混凝土預製板，避免塵土飛揚。  
Dusty road covered with reusable precast concrete slab to avoid generation of fugitive dust.