

建造業

Construction Industry



中小型企業獎
SME Award

博建 (香港) 有限公司 - 利舞台廣場的改建及加建工程 Projexasia Limited - The Alteration and Addition Works at Lee Theatre Plaza

保護環境是博建 (香港) 有限公司最重要的社會責任，我們的目標是積極為香港建設一個更美好的環境。我們務求不斷進步，致力做得更好。我們很榮幸能獲得「2012 香港環保卓越計劃 建造業-中小型企業獎」，這確認和鼓勵了我們在環境管理上的努力和成就。

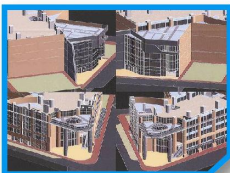
Environmental protection is the most important social responsibility of Projexasia Limited and we aim to actively participate in building a better environment for Hong Kong. We strive for continuous improvement to perform better and are honored to receive the SME Award under the Construction Industry sector in 2012 HKAEE, which acknowledges and encourages our continuous efforts and achievements in environmental management.



在地下室採用鋸切的方法，盡量減少塵土污染。
Adoption of saw cutting method at basement to minimize dust pollution.



採用雙層隔聲帆布進行嘈雜的工程。
Double-layered acoustic sheet was erected adjacent to noisy works.



建築資訊模型所提供的知識及資源能協助人員為工地一般的安全和環境事宜作出適當判斷。
Building information modeling shares knowledge and resources to support decision making for general site safety and environment.



重用鋁質腳架。
Reuse aluminum scaffolding.